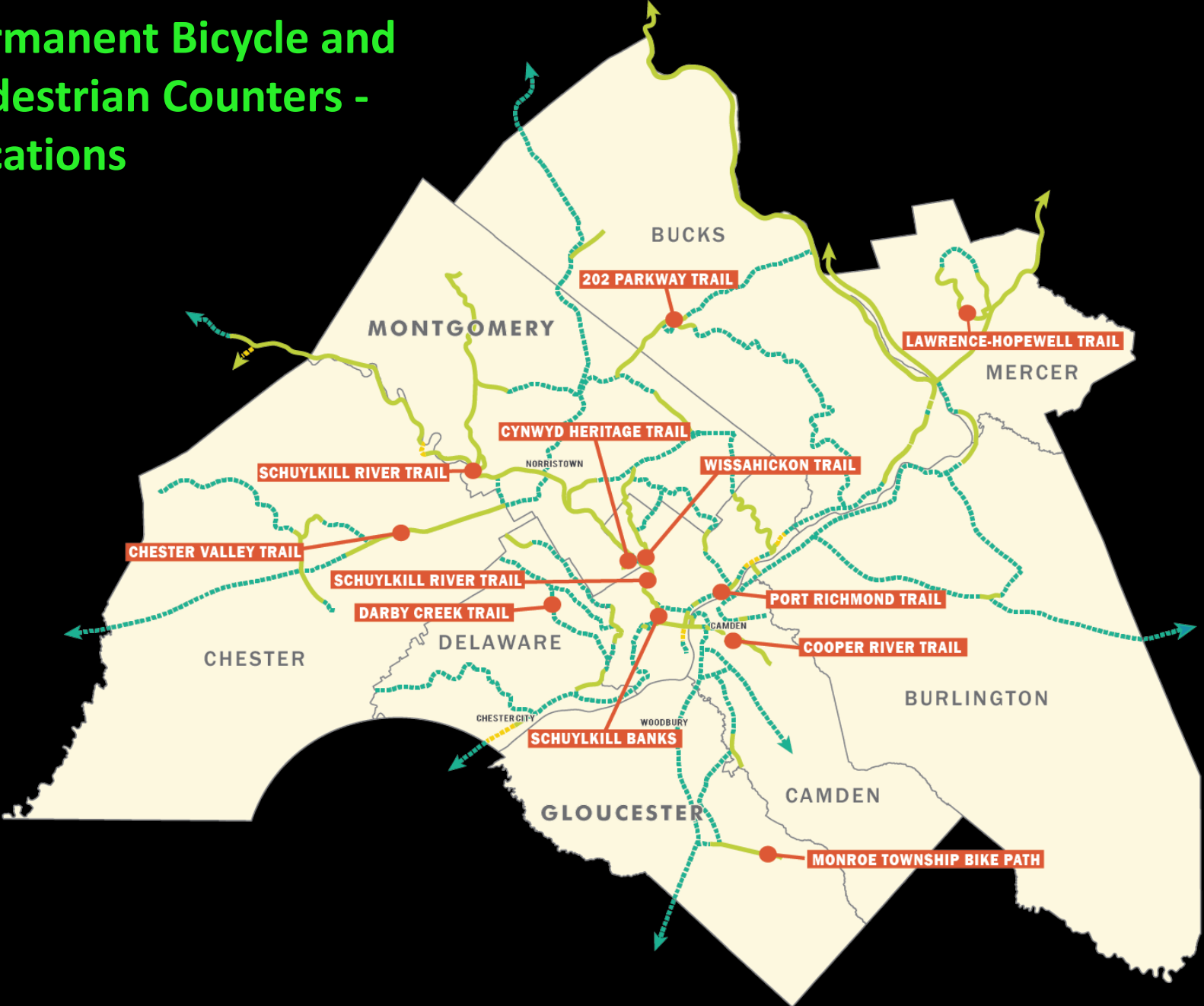


Automated Counts on Regional Trails

Shawn Megill Legendre

Circuit Coalition Meeting
November 19, 2015

Permanent Bicycle and Pedestrian Counters - Locations



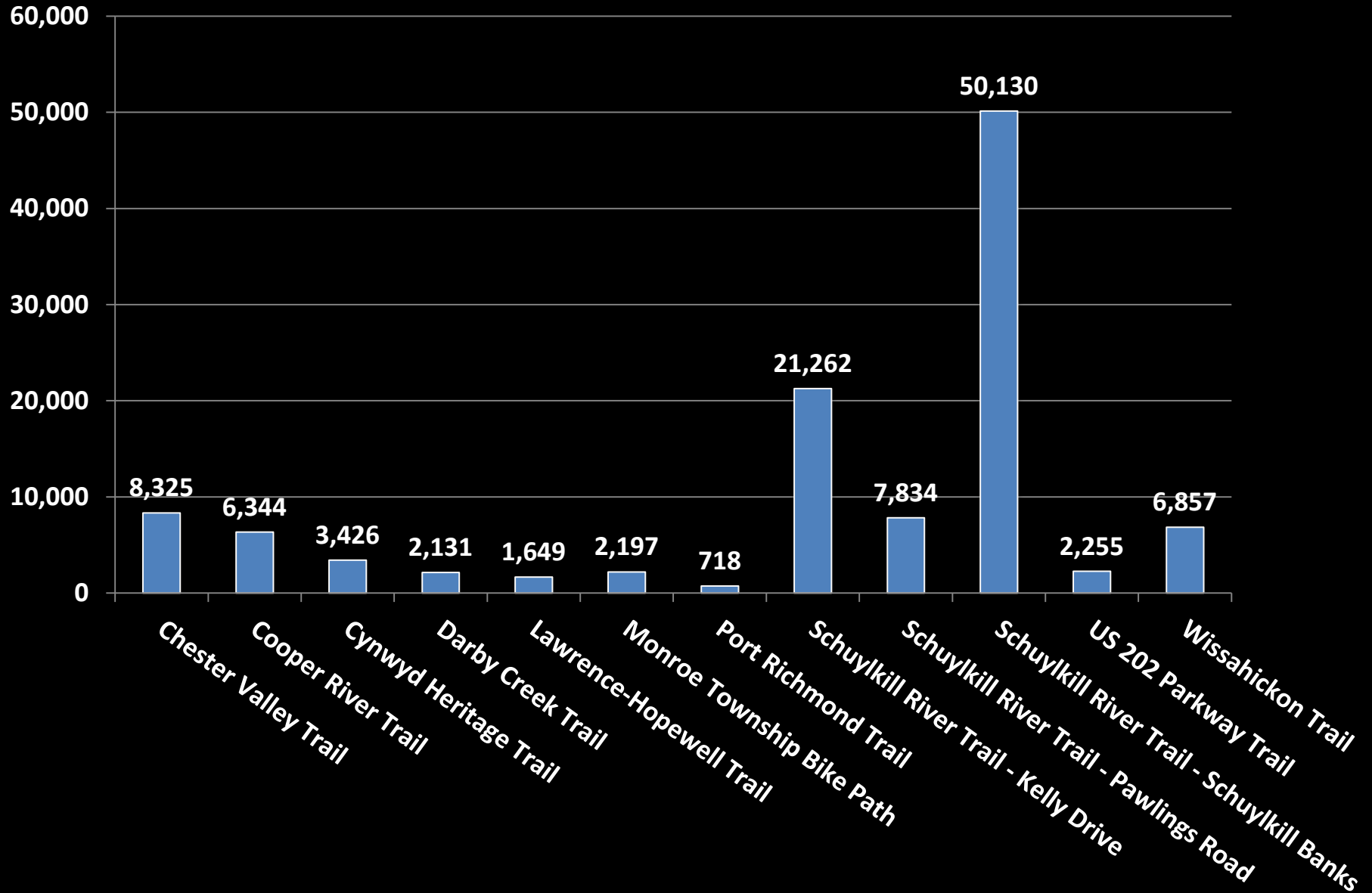
Schuylkill River Trail – Pawlings Road



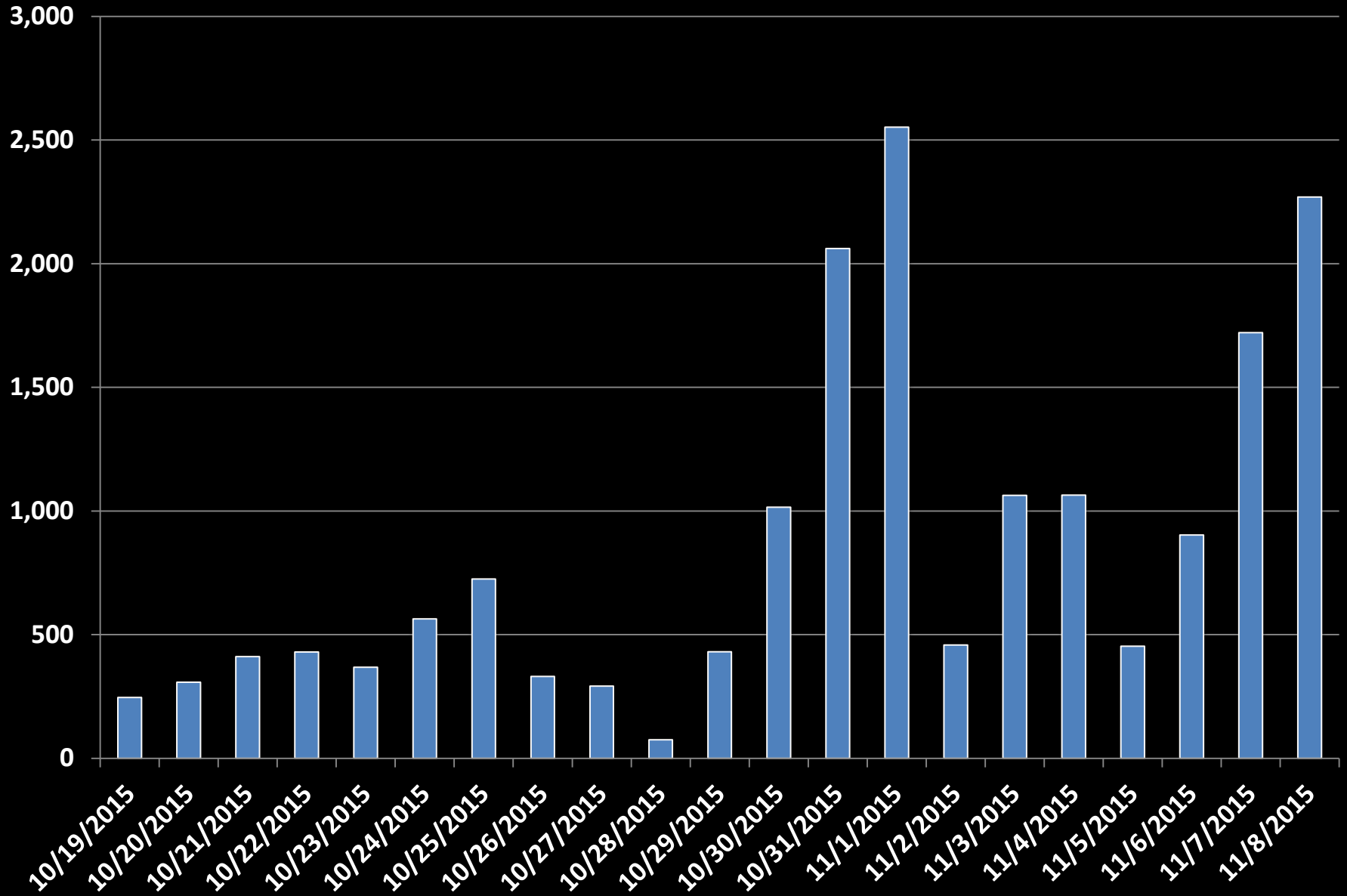
Schuylkill River Trail – Schuylkill Banks



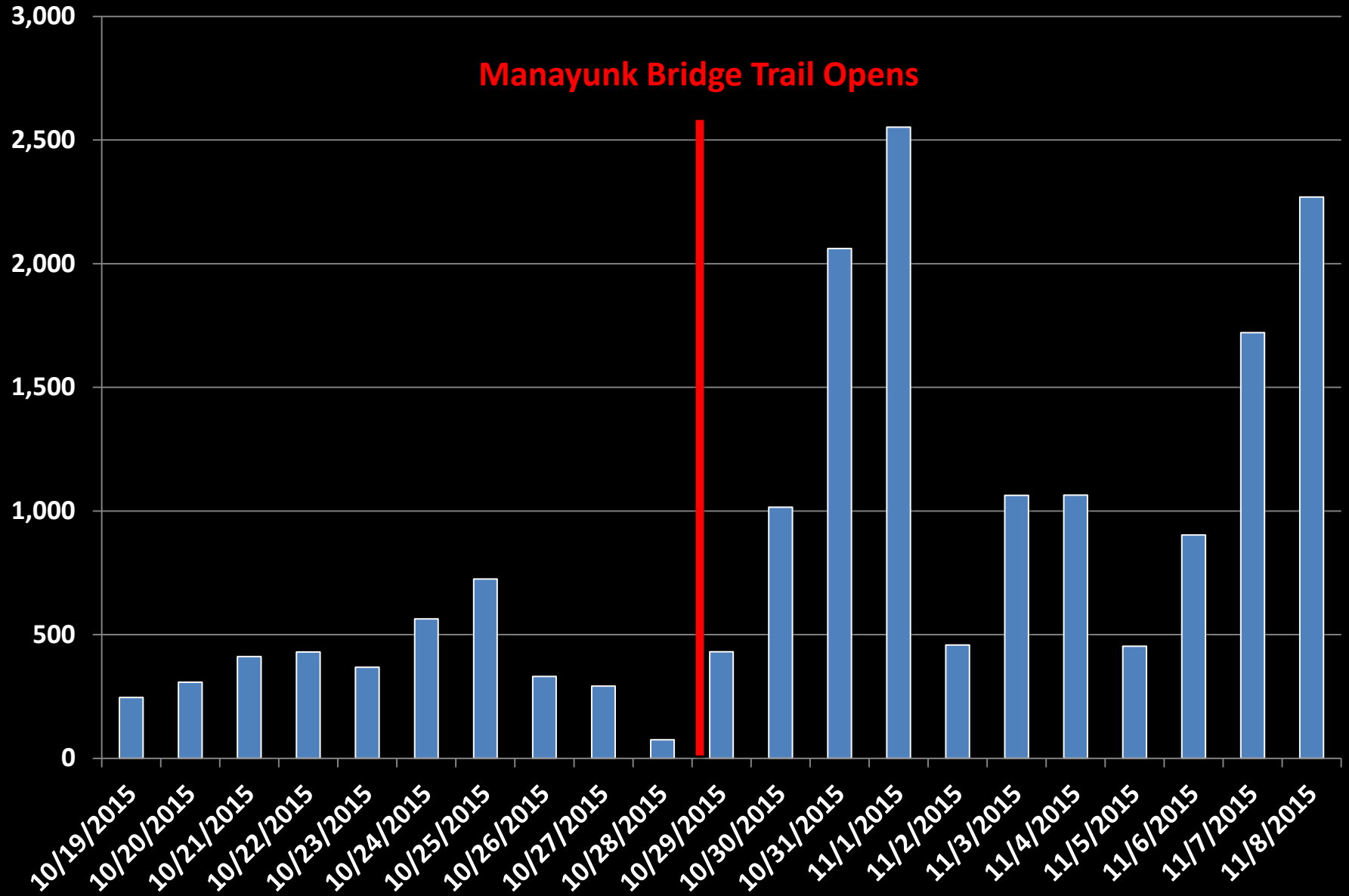
All Counters – August 24-30, 2015



Cynwyd Heritage Trail – October 19-November 8, 2015

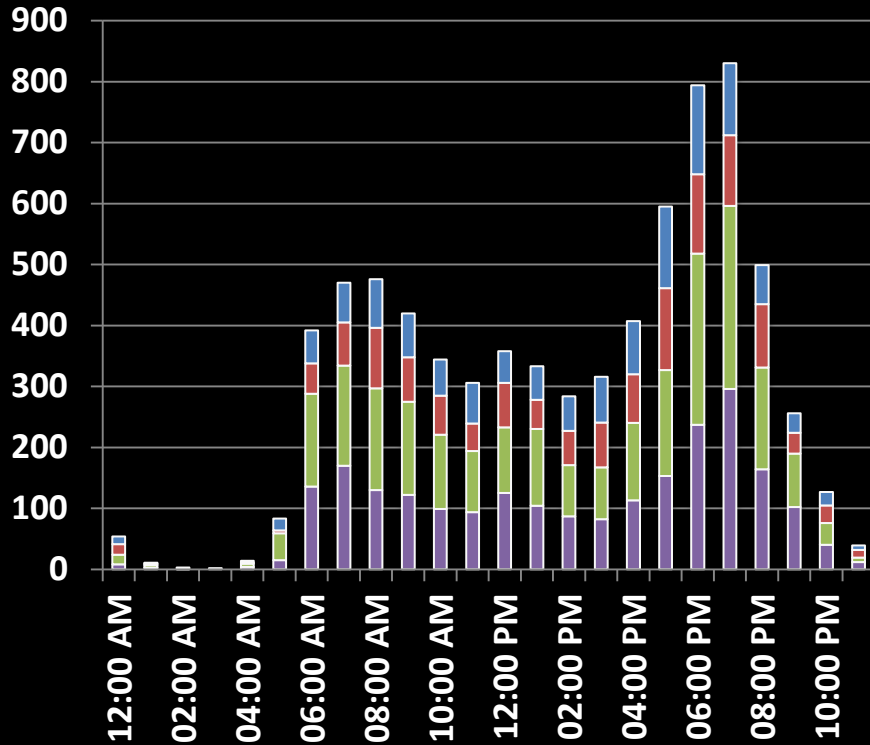


Cynwyd Heritage Trail – October 19-November 8, 2015



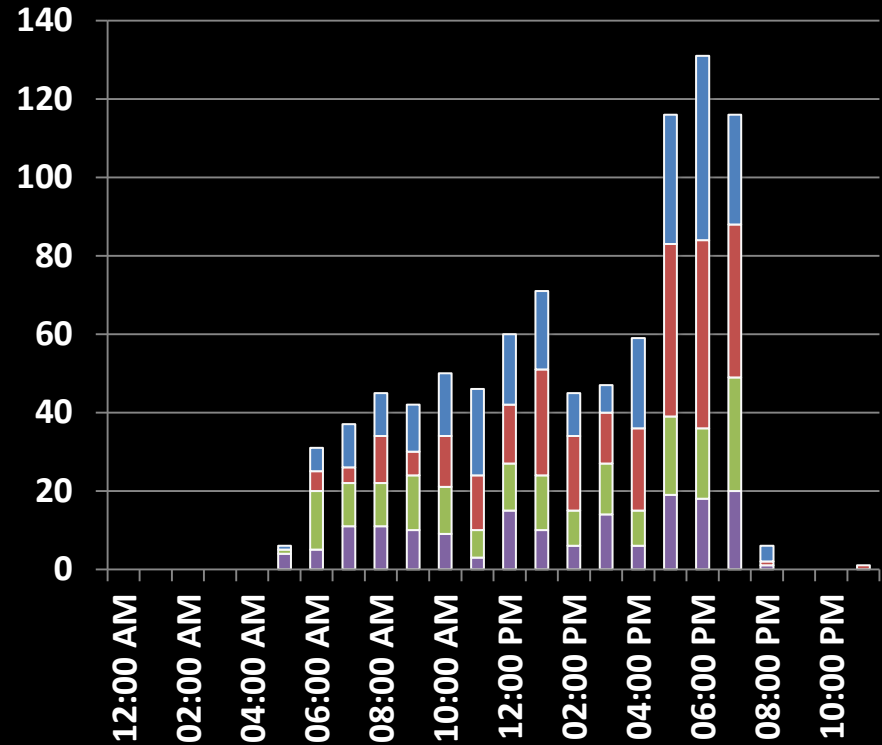
Schuylkill River Trail – Schuylkill Banks and Chester Valley Trail – Thurs., Aug. 27, 2015

Schuylkill River Trail – Schuylkill Banks



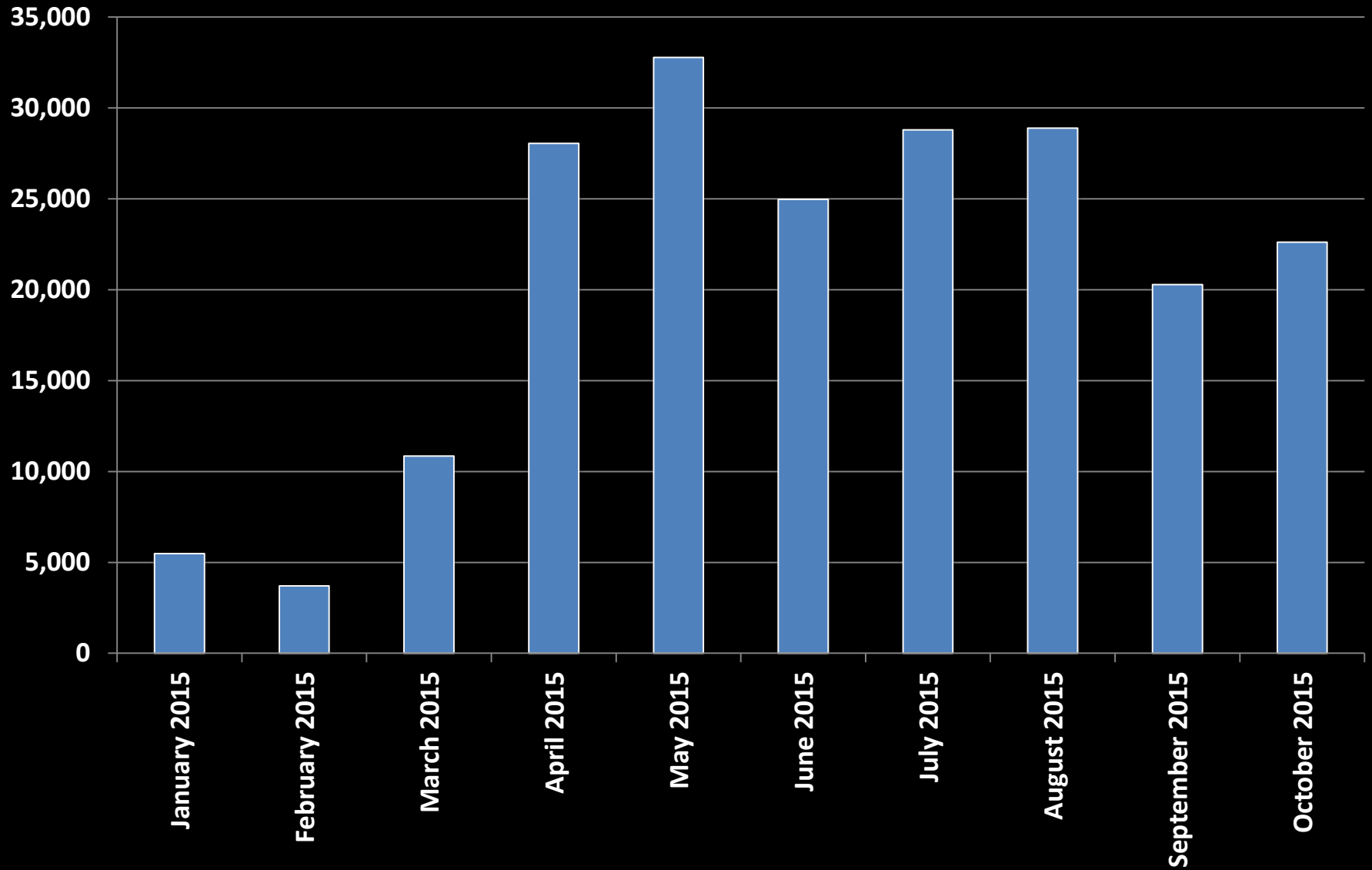
- Bicycle (Northbound)
- Bicycle (Southbound)
- Pedestrian (Northbound)
- Pedestrian (Southbound)

Chester Valley Trail

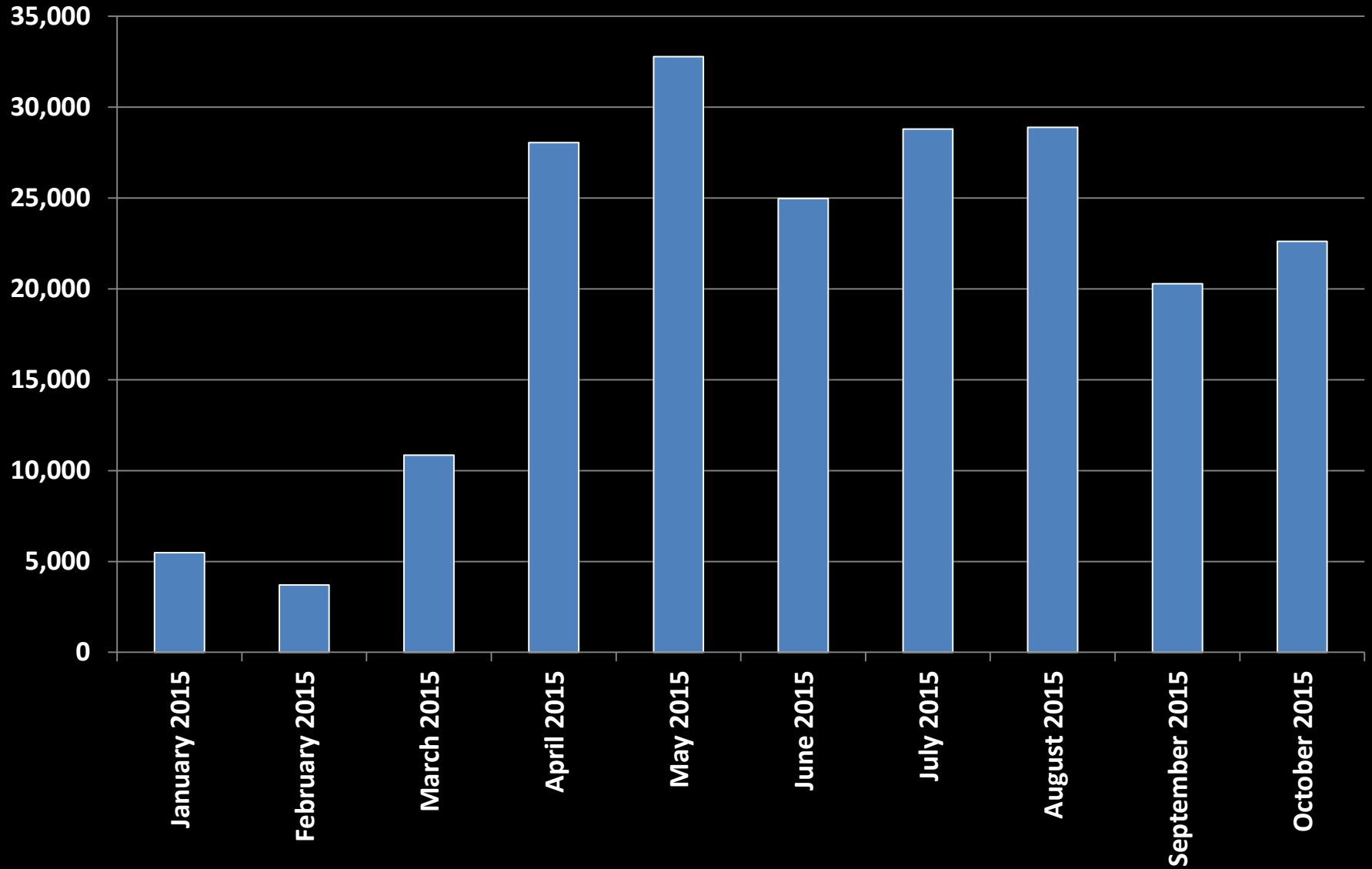


- Bicycle (Eastbound)
- Bicycle (Westbound)
- Pedestrian (Eastbound)
- Pedestrian (Westbound)

Cooper River Trail – January-October 2015

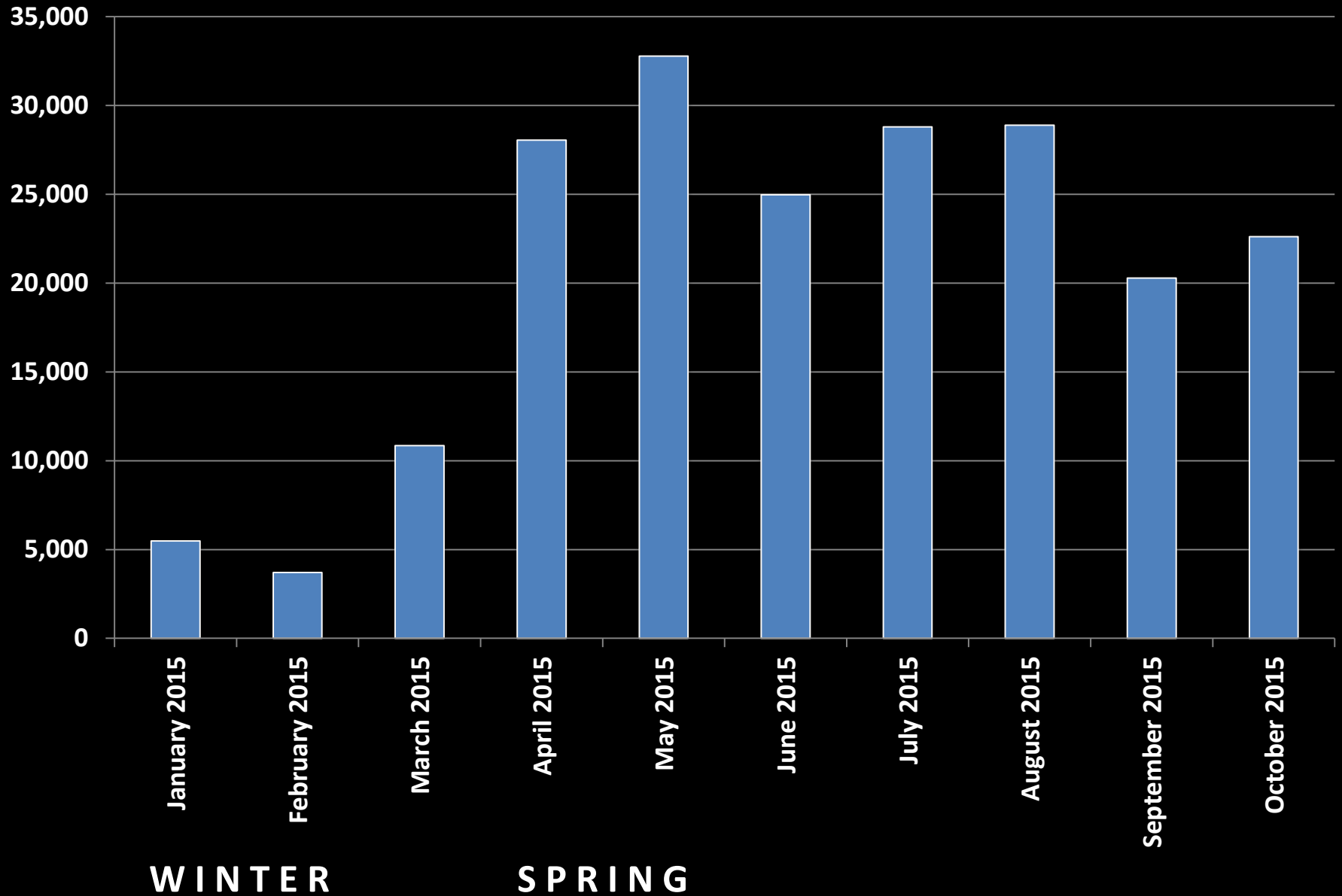


Cooper River Trail – January-October 2015

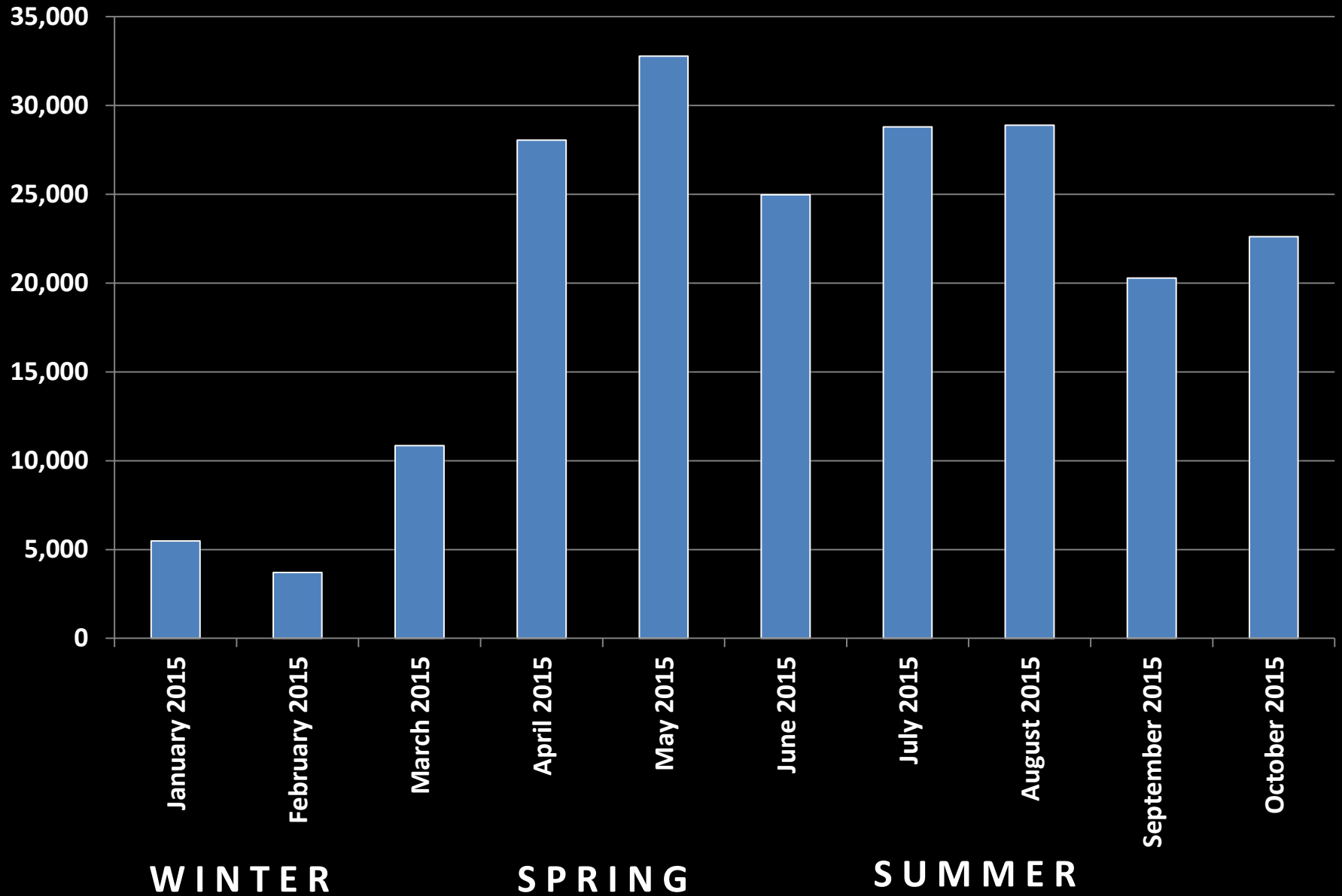


WINTER

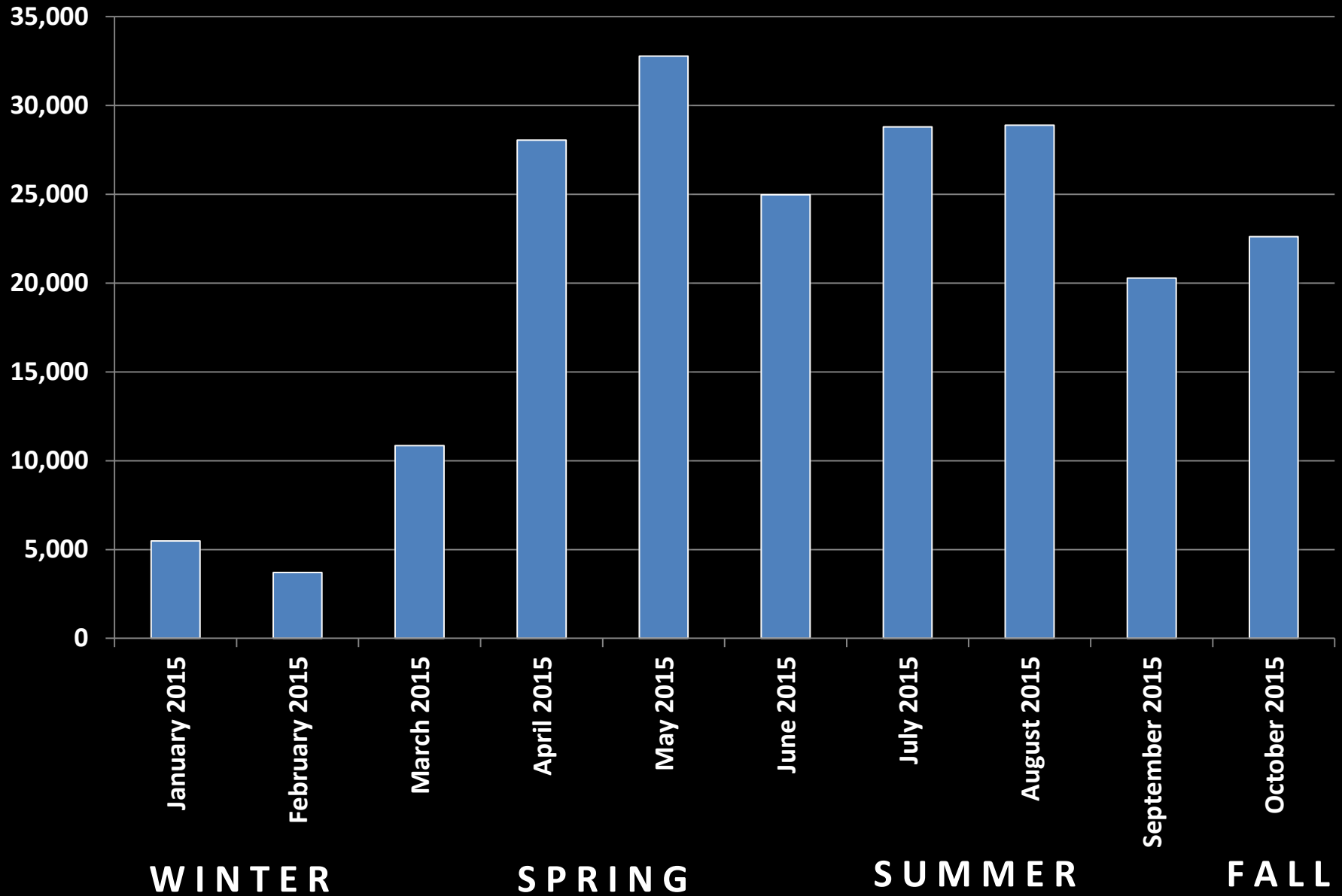
Cooper River Trail – January-October 2015



Cooper River Trail – January-October 2015



Cooper River Trail – January-October 2015



Permanent Bicycle and Pedestrian Counters - Findings

- Trails are heavily used in Greater Philadelphia
- Trails vary in the amount and type of use
- Trails have regularized patterns of use
- Trail use varies throughout the course of the year



Resources

Short-term Bicycle and Pedestrian Counts Web-viewer:
www.dvrpc.org/webmaps/pedbikecounts/

Permanent Bicycle and Pedestrian Counts Web-viewer:
<http://www.dvrpc.org/asp/bikeped/>

CyclePhilly:
www.cyclephilly.org/